

New Product Guide

James Hardie
CertainTeed
Firestone
AJC Tools

Soprema
Werner
Napco
DeWitt

Oatey
ACRO
OSI

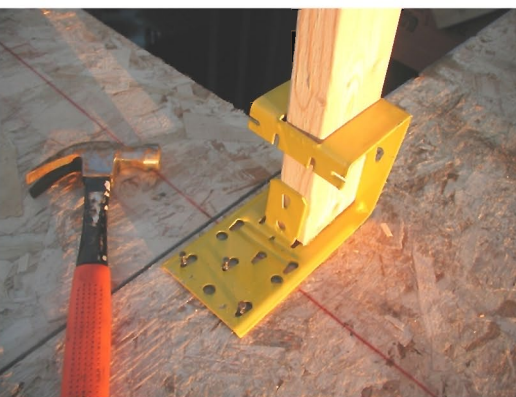


Item # 3145534 ACRO UTILITY BRACKET Product #20100

Eases building of guardrails, perimeter markers & warning lines

- Provides fall protection for openings and edges
- Used with construction grade 2x4" lumber
- Maximum spacing 8' apart
- Can be used in all phases of construction
- Powder coated safety yellow
- Made in America

Use on controlled access zones, ramps, runways, walkways, hoisting areas, stairways, wall openings, skylights, excavations and leading edges.



Item # 3527701 OATEY All-Flash® No-Calk® Highrise® Roof Flashing Product #11930 1.5 IN-3 IN

Item # 3527702 OATEY All-Flash® No-Calk® Highrise® Roof Flashing Product #11931 3 IN-4 IN

- Slides over pipe for pitch 10 to 60 degrees.
- Do not use petroleum based products on plastic bases or rubber collars.
- Ring on collar tears off, allowing flashings to seal different pipe diameters.
- Rated 180° continuous heat.
- Not for hot-mopped or built-up roofs.
- Non-fading, non-cracking and non-rusting rigid black TPE base and sealing collars.
- Approved for Type B installations.



Item # 3124103 AJC ROOFING HATCHET BOWTIE BLADE Heavy-duty roofing blade has four sharpened edges for maximum usage. Made from the toughest steel. Fits 005-MH magnetic hatchet and the 057-RK3 roofers knife.

Item # 3124105 AJC ROOFING HATCHET BLADES LARGE Blades are made of finest tempered carbon steel and fit many of the AJC Hatchets. Perfect for cutting through shingles.

Item # 3124107 AJC BLADE KEEPER WING NUT & BOLT Hatchet blade keeper and two screws



James Hardie



*Deeper Wood Grain Textures
And A New Nail Line
For Easier Installation!*



- Item # 5404411 WOODSTOCK BROWN
- Item # 5404412 BOOTHBAY BLUE
- Item # 5404413 COUNTRYLANE RED
- Item # 5404414 COBBLE STONE
- Item # 5404415 TIMBER BARK
- Item # 5404416 MOUNTAIN SAGE
- Item # 5404417 IRON GRAY
- Item # 5404418 TUSCAN GOLD
- Item # 5404419 EVENING BLUE
- Item # 5404420 SOFT GREEN



- Item # 5404311 WOODSTOCK BROWN
- Item # 5404312 BOOTHBAY BLUE
- Item # 5404313 COUNTRY RED
- Item # 5404314 COBBLESTONE
- Item # 5404315 TIMBER BARK
- Item # 5404316 MOUNTAIN SAGE
- Item # 5404317 IRON GRAY
- Item # 5404318 TUSCAN GOLD
- Item # 5404319 EVENING BLUE
- Item # 5404320 SOFT GREEN

NEW HARDIE SHINGLE STRAIGHT EDGE
15.25"X48" 43 PER SQ

Item # 5400027 PRIMED

NEW HARDIE SHINGLE STAGGERED EDGE
15.25"X48" 50 PER SQ

Item # 5400028 PRIMED

NEW HARDIE STRAIGHT EDGE
15.25"X 48" 43 PC SQ

- Item # 5404401 LIGHT MIST
- Item # 5404402 SAIL CLOTH
- Item # 5404403 NAVAJO BEIGE
- Item # 5404404 MONTEREY TAUPE
- Item # 5404405 ARCTIC WHITE
- Item # 5404406 AUTUMN TAN
- Item # 5404407 SANDSTONE BEIGE
- Item # 5404408 HEATHERED MOSS
- Item # 5404409 WOODLAND CREAM
- Item # 5404410 KHAKI BROWN

NEW HARDIE STAGGERED EDGE
15.25"X48" 50 PER SQ

- Item # 5404301 LIGHT MIST
- Item # 5404302 SAIL CLOTH
- Item # 5404303 NAVAJO BEIGE
- Item # 5404304 MONTEREY TAUPE
- Item # 5404305 ARCTIC WHITE
- Item # 5404306 AUTUMN TAN
- Item # 5404307 SANDSTONE BEIGE
- Item # 5404308 HEATHER MOSS
- Item # 5404309 WOODLAND CREAM
- Item # 5404310 KHAKI BROWN

HardieShingle® siding is fiber-cement shingle siding for sidewall applications. HardieShingle siding is available as a prefinished James Hardie product with ColorPlus® Technology. The ColorPlus coating is a factory applied, oven-baked finish available on a variety of James Hardie siding and trim products.

HardieShingle® siding has the same warm, authentic look as cedar shingles, yet it doesn't rot, crack or split. It's beautiful as a primary siding or as a complement to other styles of James Hardie® siding, and it's also engineered for climate to better withstand a home's particular weather challenges.

Werner
CertainTeed

REESE
WHOLESALE.COM



FIBERGLASS STEPLADDER Rated 300LB

Item # 3145770

6' Prod. #6206

Item # 3145771

8' Prod. #6208

Item # 3145772

10' Prod. #6210

Item # 3145773

12' Prod. #6212

- Holster Top® is now ToolLasso® ready
- Back-up plates reinforce all top connectors
- Shoulder bolt and nut on top hinge
- 4 rivets attach top to each front rail
- All steps and two rear horizontals are knee-braced
- Double riveted, slip-resistant Traction-Tred® steps
- Heavy duty internal spreaders
- Full set of rear horizontals spaced one per foot
- Shoe pads riveted to the EDGE® - molded brace and foot pad combination provides enhanced bracing strength and increased protection against damage
- Every rivet backed up by metal plate or washer to protect rails



Item #3145780 ALUMINUM WALK PLATFORM

Rated 500LB 16'

DESIGNED TO HOLD UP TO 2 PEOPLE. INTENDED USE WITH THE QUALCRAFT ALUMINUM LADDER 2420 JACKS.



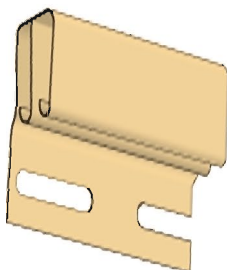
Item # 3145790 WERNER
EXTENSION LADDER COVERS
Prod. #AC19-2

Helps prevent damage to support surfaces. Especially designed to 'snap' over extension ladder rail end caps. Resists paints, stains, thinners and solvents.



Item #3145791 WERNER
MULTIPURPOSE PROJECT TRAY
Prod/ #AC24

Project Tray conveniently holds tools, paints and supplies. Made for Werner multiladders and stepladders. Attaches easily; works at multiple heights; includes ToolLasso®



Item # 5207920 CERTAINTEED
DUAL UNDERSILL SANDPIPER
Length 12' 6"



Item # 5207627 CERTAINTEED
3/4 J CHANNEL CEDAR BLEND
Length 12' 6"

Napco
Dewitt
GAF
OSI

REESE
WHOLESALE.COM



- Hand-crafted, unique full-bead styling is an elegant way to take your home's appearance from ordinary to extraordinary
- Full-beaded edge creates a unique shadow line for added dimension and appeal
- Fine brushstroke emboss recreates the appearance of freshly painted wood

Item # 5120601 NAPCO 6.5" AMERICAN BEADED WHITE
 Item # 5120602 NAPCO 6.5" AMERICAN BEADED WICKER
 Item # 5120603 NAPCO 6.5" AMERICAN BEADED STONE

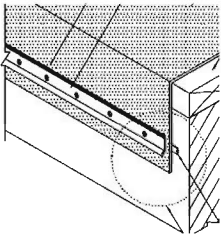


6.5 Beaded



Item # 5001170 12 IN X 12 FT
 NAPCO T-4 DURABILT VENT
 SOFFIT WHITE
 ALUMINUM/FULL VENT

- two-coat acrylic finish
- ventilation of 4.4 sq. inches per square foot
- nominal thickness .019"
- 12'0" length
- 3/8" J-channel or 3/8" F-channel recommended



Item # 2309200 GAF
 LIP TERM BAR 6" O.C.



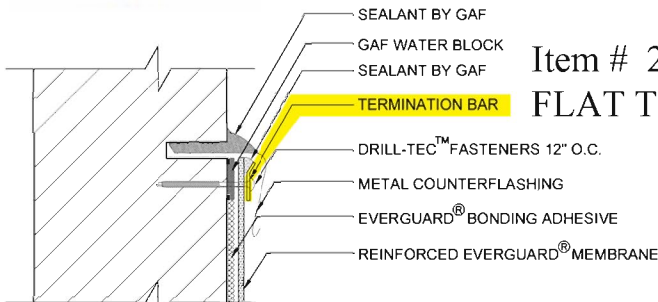
Item #4533000 OSI WINTEQ
 WINDOW FLASH(BUTYL)

Item #4533004 OSI WINTEQ
 FLEXIBLE FLASH (ASPHALT BASE)



Item # 2309581 GAF
 TPO 6" HW COVER TAPE

- Prevents wall assembly leaks
- Forms a strong, long lasting seal around fasteners and penetrations
- Self adhering flashing makes it easy to install, inspect and repair
- Highly durable, resists mechanical damage and is tough tear resistant
- Part of WINTeq



Item # 2309210 GAF
 FLAT TERM BAR

Item # 2504234 DEWITT
 Prod. #253 3 Gal
 PRO FLASH XTRA
 ROOF CAULK
 SBS RUBBERIZED
 FLASHING CEMENT



Rubberized for "XTRA" long lasting repairs and "XTRA" wide application temperature range: summer grade 30°F - 120°F, winter grade 0°F - 80°F.
 Non-Asbestos
 COVERAGE One gallon covers approximately 15 - 20 sq. ft. at 1/8" thick.
 SPECS: ASTM 4586-86, FED.
 SS-C-153C, ASTM D-2822 Except Material Is Asbestos Free
 PRO FLASH XTRA Flashing Cement MSDS
 PACKAGING: 3 gal

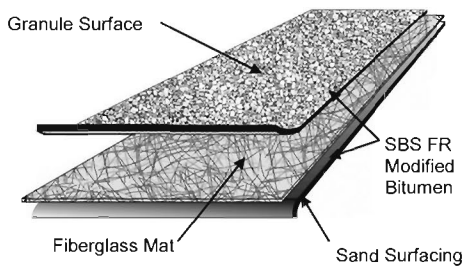
Soprema
Firestone

REESE
WHOLESALE.COM

- FI SBS GLASS FR
- Item # 2002130 BLACK
- Item # 2002131 WHITE
- Item # 2002135 ULTRA WHITE

Firestone
BUILDING PRODUCTS

Firestone SBS Glass FR is a Styrene-Butadiene-Styrene modified bitumen membrane that is reinforced with a 1.8 lb/100 ft² (90 grams/m²) fiberglass mat. The addition of SBS rubber optimizes asphalt's natural waterproofing characteristics and increases system performance. This proprietary compound provides resistance to thermal and physical forces over a wide range of temperatures. SBS Glass FR is ideal for both new construction and reroofing applications. Low slope roofs of any size, even those with numerous penetrations, may accommodate a Firestone SBS Glass FR application. Firestone SBS Glass FR with UltraWhite granules has a highly reflective surface designed to meet national, state and local energy code requirements.



Item # 2053028 FI QS
CORNER FLASHING
ECO WHITE

Firestone EcoWhite EPDM consists of Firestone flashing factory laminated to QuickSeam Tape. It is 8.5" in diameter and is designed to flash inside and outside of corners in conjunction with EcoWhite EPDM roof systems.



Item #2053026 FIRESTONE
QS EPDM T-JOINT COVERS
6 " ECO WHITE

QuickSeam Joint Cover is uncured FormFlash™ laminated to QuickSeam tape. A second 3" layer of tape is applied at the center and is a special uncured, flowable QuickSeam tape compound. The QuickSeam Joint Cover conforms to irregular surfaces such as encountered at "T" joints, readily providing an excellent seal.



Item #2053024
3 IN X 100 FT FIRESTONE
QS SPLICE TAPE
ECO WHITE W56RAC1603

QuickSeam Splice Tape is designed for field splicing of RubberGard™ EPDM membrane panels and flashing.



Item # 2220172 5gal Soprema Alsan Flex
1000 Matrix (Silver) (part# L-MBSP23)

Alsan FLEX 1000 Matrix is a flexible, high performance, watertight, puncture and UV resistant ready to use one-component resin used in metal building and single-ply restoration and waterproofing liquid-applied membrane applications. Alsan FLEX 1000 Matrix is used as micro-fiber enhanced flashingpaste for waterproofing of small and difficult penetrations where standard Alsan FLEX reinforced membrane is not possible to apply.

Item # 2220170 Soprema
Alsan Flex 5gal All-Purpose Cleaner
(part# L-MBSP07)

Soprema Alsan Cleaner is used to clean and reactivate the transition area of in-place Soprema Alsan liquid-applied one-component polyurethane membranes at tie-ins, repairs and between staged coats of resins. Soprema Alsan Cleaner may also be used as solvent for cleaning spills, tools and equipment.